

ASENOR
ENGINEERING

Professional Engineering Solutions

web: asenorgroup.com, **email:** gm@asenor.sa, **phone:** +966 53 269 1384

Asenor Engineering LLC CR No.: 7050515647



About Us

Asenor Engineering is a privately held construction and engineering company headquartered in Istanbul, Türkiye. The company was established in 2018 and operates under Turkish commercial law as a limited liability company (LLC).

Asenor Engineering provides full-cycle services in architectural design, general contracting, real estate development, project management, and technical consultancy. Its portfolio includes residential, hospitality, mixed-use, and public infrastructure projects across Türkiye, Uzbekistan, and Central Asia.

Among its landmark achievements is the Silk Road Samarkand Tourism Complex, a 240,000 m² hospitality and cultural development completed on time for the 2022 SCO Summit, attended by 14 state delegations. The company is officially registered in the Kingdom of Saudi Arabia under Commercial Registration No. 7050515647, issued on 29 June 2025. Asenor Engineering has initiated strategic coordination with consultants and stakeholders in the Kingdom to align with Vision 2030 objectives and local development priorities.

**Advanced Engineering
& Structural Design**

**General Contracting
& Construction**

**Project Management
& Technical Control**

**Infrastructure
& Specialized Works**

“Driven by engineering excellence, delivered with precision.”



Mission / Vision / Values

Mission

To deliver architecture-driven, technically precise, and context-sensitive development projects that contribute to long-term value for communities, clients, and the environment.

Vision

To become a trusted regional development partner in the Gulf, Central Asia, and Türkiye by offering scalable, high-quality, and culturally integrated construction solutions aligned with national development strategies.

Core Values

- * Reliability in execution and deadlines
- * Commitment to transparency and financial discipline
- * Respect for local culture, planning norms, and built heritage
- * Architectural quality and design-led development
- * Long-term client partnerships based on trust and delivery
- * Adherence to local regulations, engineering standards, and compliance frameworks



Why Us

Asenor Engineering delivers complex, high-profile projects under tight deadlines and in international contexts. Our work is defined by architectural precision, proactive management, and strict budget and schedule control from concept to delivery. Our approach is not based on generic templates but on client-specific objectives, supported by a tightly coordinated internal team.

Turkish construction management is widely respected across the region for its flexibility, operational discipline, and commitment to results. Asenor Engineering exemplifies this reputation in practice.

A clear reference is the Silk Road Samarkand Tourism Complex (240,000 m²), completed on time for the 2022 SCO Summit. The venue hosted 14 state delegations and is now recognized as a regional landmark for cultural and business tourism. Although Asenor Engineering holds significant project experience across multiple countries, we welcome developments of various scales within the Kingdom of Saudi Arabia. We see this as an opportunity to demonstrate our delivery standards, deadline discipline, and readiness to earn long-term trust through performance. Clients work with us not just for execution, but for ownership of the outcome.



**Architectural
Precision**



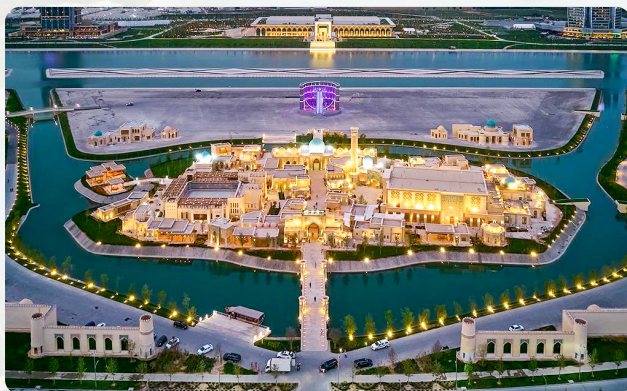
**Proactive
Management**



**Strict Budget
Control**

Our Projects

Completed and Ongoing Projects



Construction of a tourist center in Samarkand

The goal of the construction of the complex is to expand tourism infrastructure, develop and diversify the economy of the region and the republic as a whole, as well as build a modern and innovative future, including the protection of ecology and preservation of the historical heritage of Uzbekistan. The project provides for the construction of several new facilities (congress center, hotels, commercial zones) related to hospitality and leisure.



New Airport Terminal

The goal of the new airport terminal is to create an international air hub, develop the tourist potential of the region, improve the quality of service and expand the range of services provided by the airport.



Gas Processing Plant - Samarkand

The project goal is to expand the capacity for deep processing of natural gas, reduce imports of hydrocarbon raw materials, cover the country's demand for high-quality and environmentally friendly fuel, as well as providing the market with strategic products made from its raw materials.

Our Projects

Completed and Ongoing Projects



The Blade

Connection Design + Workshop Drawings

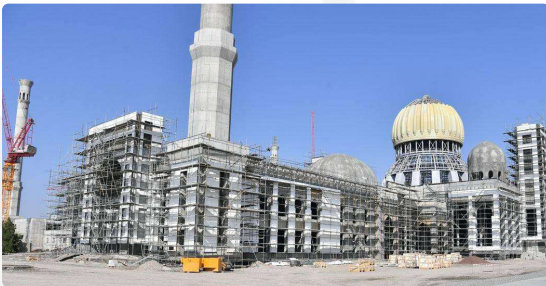


Construction of BCS-6 Gazli

The start-up of this facility will increase the hydrocarbons compression up to 20.0 mln m³/day, which will be provided by two 20 MW Gas Compressor Units supplied by SIEMENS Energy (Germany). At the moment, the booster compressor station is ready to work in the operational mode at the design capacity.

Our Projects

Completed and Ongoing Projects



Reconstruction and Construction of the Imam Al-Bukhari Memorial Complex

This landmark project was fully executed and delivered by our team, not as a subcontracted task but under our complete responsibility and management, strictly on schedule.

The complex comprises:

- * A mosque accommodating 9,020 worshippers
- * Four minarets, each 74.6 meters high
- * An ablution hall for 164 people
- * A hotel complex for visitors and pilgrims
- * Administrative and service facilities
- * The mausoleum of Imam Al-Bukhari

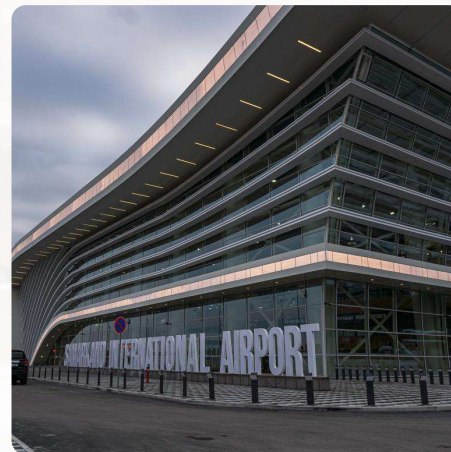
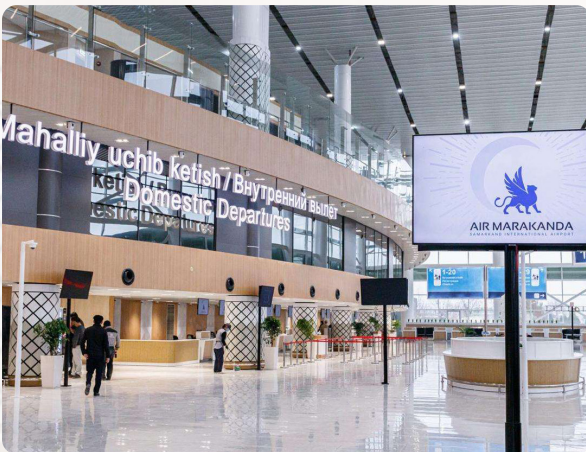
Our Projects

Completed and Ongoing Projects



New Terminal in Samarkand

Construction of the New Terminal at Samarkand International Airport. The terminal was fully designed and built by our team, delivered under complete management and completed strictly on schedule. The project required advanced engineering solutions, including large-span steel structures and glass curtain walls, making the building both functional and architecturally distinctive. Our team executed all stages - from foundation and structural works to MEP systems, finishing, and commissioning - ensuring the terminal meets international standards and serves as a modern air hub for the region.

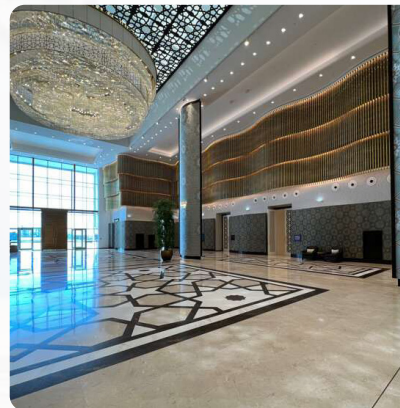


Our Projects

Completed and Ongoing Projects

SCO Summit Facilities

Construction Overview: SCO Summit Facilities (2019–2022) From 2019 to 2022, during the challenging conditions of the COVID-19 pandemic, our company - acting as a subcontractor in partnership with Uzbek firms - undertook a high-level strategic assignment of national and international importance: the construction of core facilities for the 22nd SCO Summit in Samarkand. The scope included a state-of-the-art congress center and multiple hotel complexes, delivered under tight deadlines directly linked to the summit preparations. Our engineers, together with more than 5,000 workers mobilized from our side, ensured that every stage of the project was executed to the highest standards and completed strictly on schedule. Despite pandemic-related constraints, the assignment was fulfilled in full, and the SCO Summit of September 2022 was successfully hosted in the newly built facilities



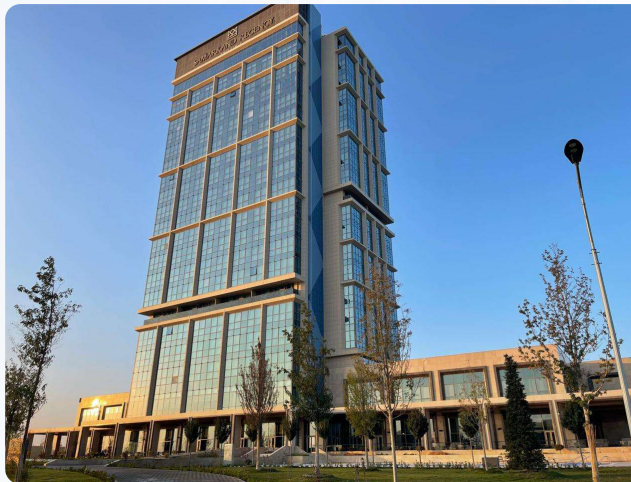
Our Projects

Completed and Ongoing Projects



Our Projects

Completed and Ongoing Projects



Our Projects

Completed and Ongoing Projects



Our Projects

Completed and Ongoing Projects



Our Projects

Completed and Ongoing Projects



Our Projects

Completed and Ongoing Projects



Our Projects

Completed and Ongoing Projects

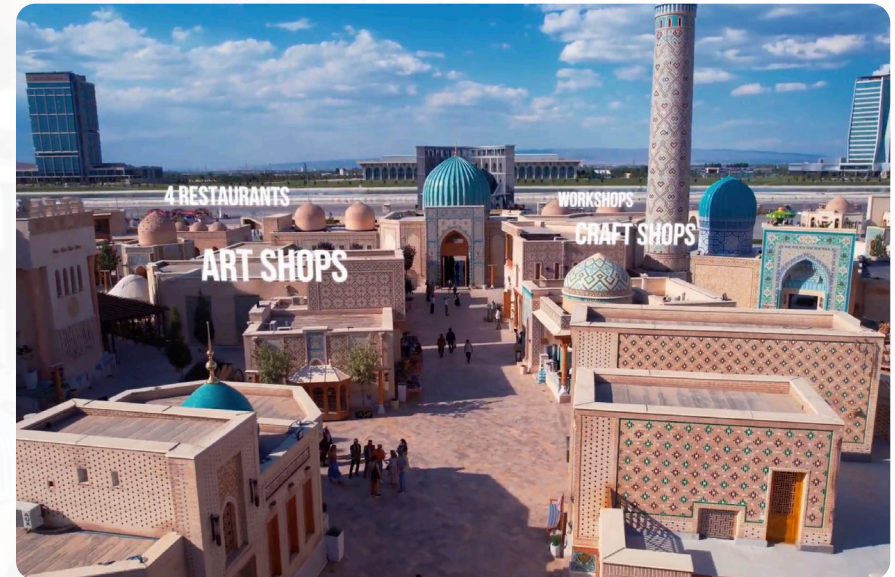


Hotels & Tourism Facilities, Samarkand

Our company has gained international experience as a subcontractor in large-scale projects, including the construction of hotels and tourism facilities in Samarkand. We have proven our ability to deliver engineering solutions and execution at the highest standards. This expertise allows us to confidently participate in similar landmark projects across any country.

Our Projects

Completed and Ongoing Projects



Our Projects

Completed and Ongoing Projects



Engineering Expertise

In Saudi Arabia, our company participates in this project as a subcontractor, delivering essential engineering solutions.

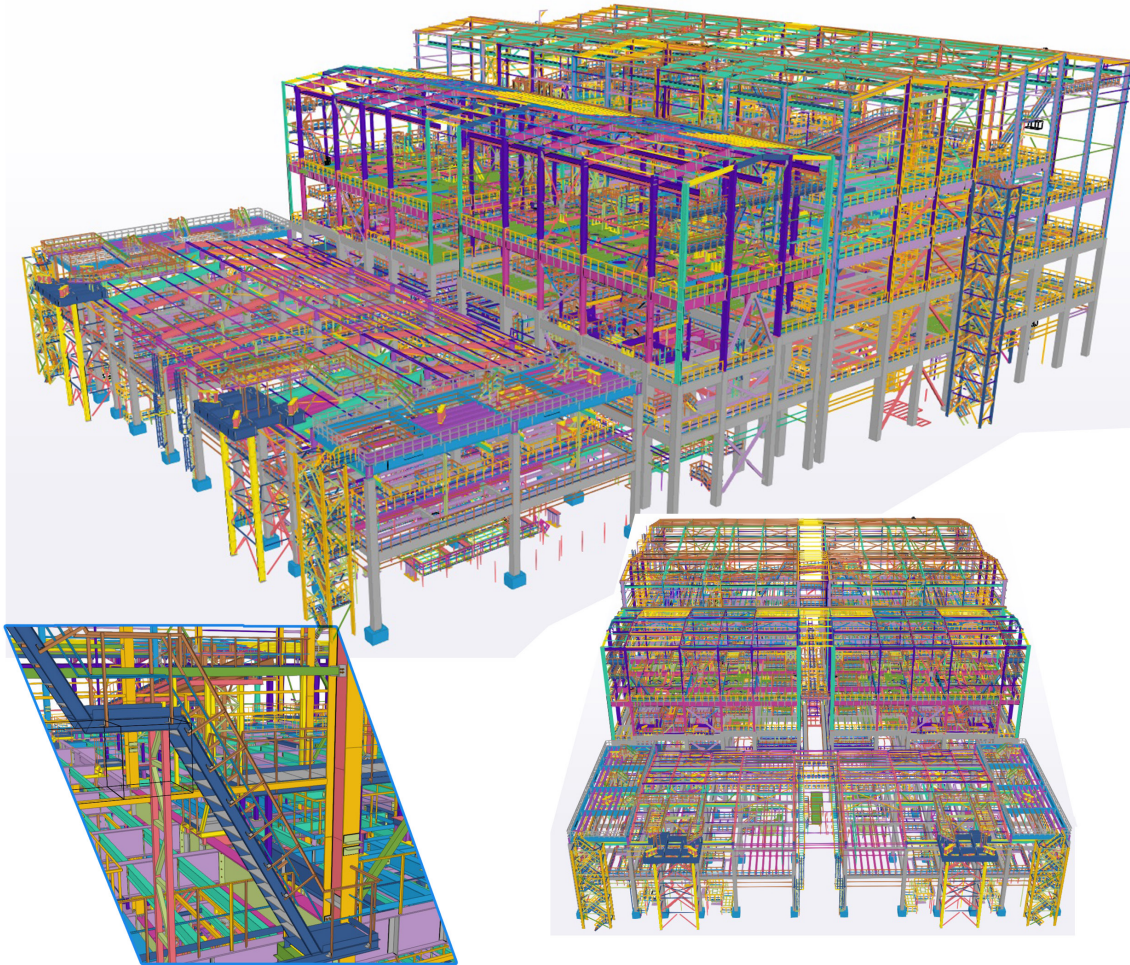
We provide the design integrity and technical calculations required for the construction process.

Structural Execution

Our responsibility also covers the complete execution of structural steel works.

Through this contribution, we strengthen the project with both expertise and implementation.

SAM 103-10



Execution Details

Our professional team worked meticulously at every stage of the project, successfully delivering all outputs on the scheduled timeline. Tekla models, fabrication drawings, and erection plans were entirely prepared by our firm.



8,000 ton
Total Steel Weight

Project Overview

This project stands out with a total steel structure weight of 8,000 tons, comprising multiple separate buildings. The interiors of the main buildings feature a significant number of platform elements, requiring detailed engineering and precise execution throughout the process.

✓ 3D Tekla Model

✓ Assembly Drawings

✓ Single Part Drawings

✓ Erection Drawings

MOF3 401600 MILLING B.



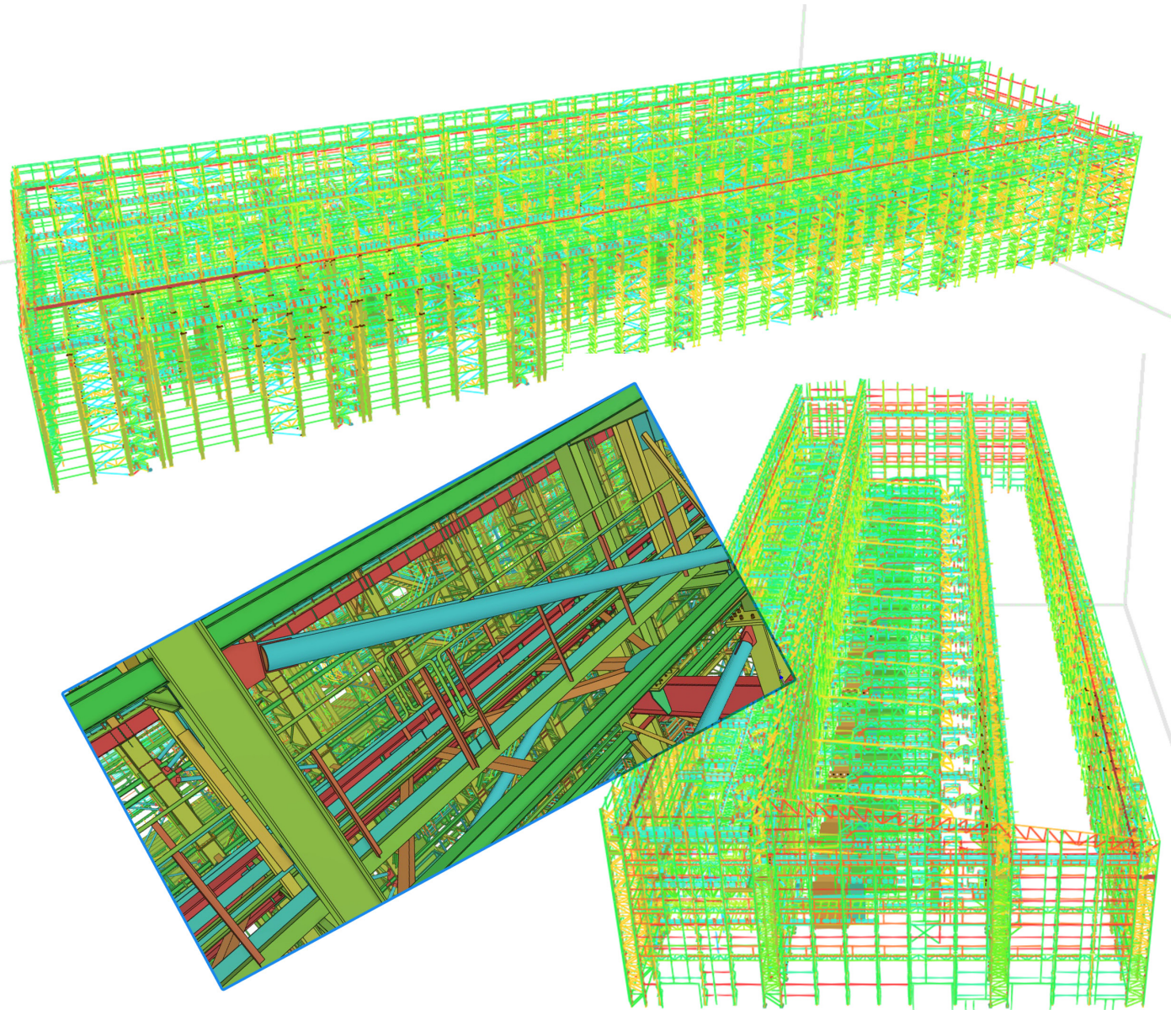
14,000 ton
Steel Weight



Uzbekistan
Project Location

Scope of Work

- ✓ 3D Tekla Model
- ✓ Single Part Drawings
- ✓ Assembly Drawings
- ✓ Erection Drawings



MOF3 401607



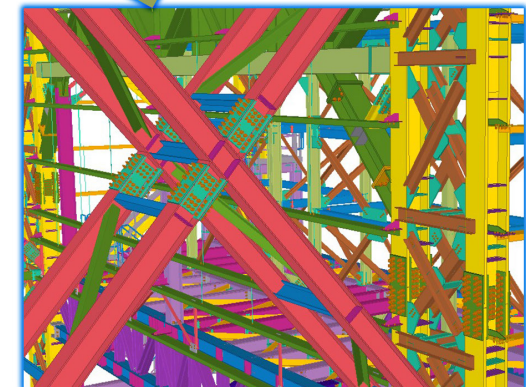
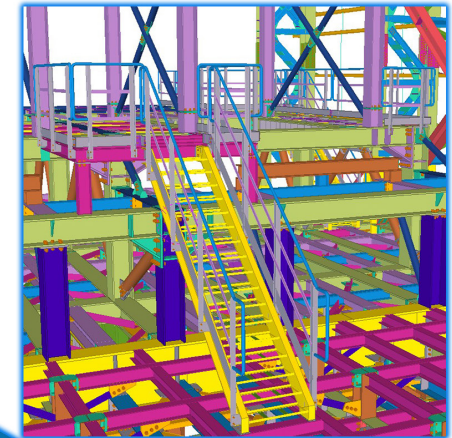
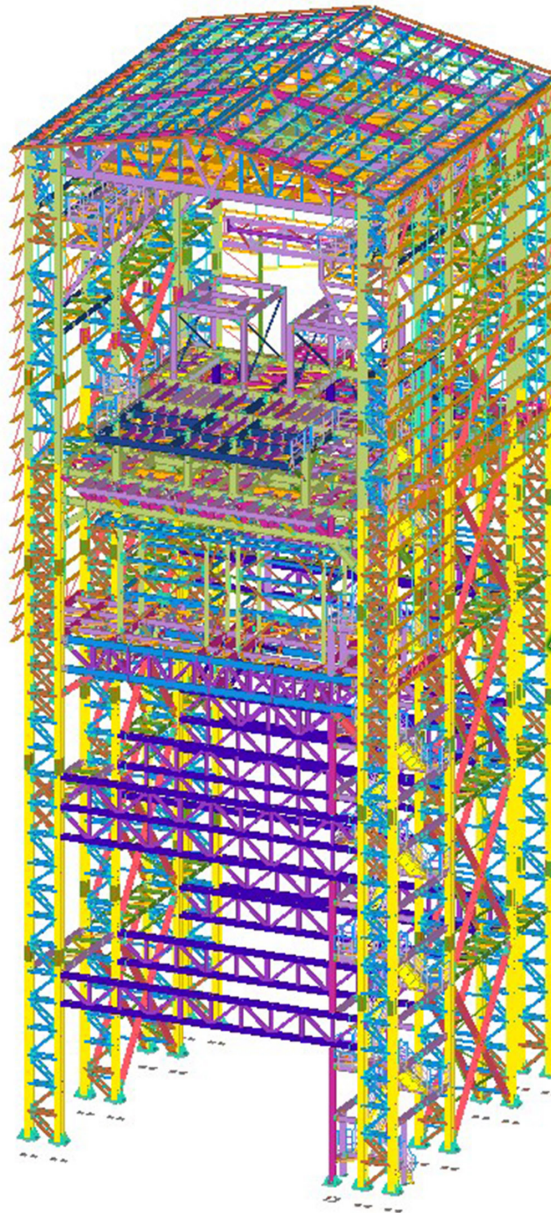
2,730 ton
Steel Weight



Uzbekistan
Project Location

Scope of Work

- ✓ 3D Tekla Model
- ✓ Single Part Drawings
- ✓ Assembly Drawings
- ✓ Erection Drawings



MOF3 402303



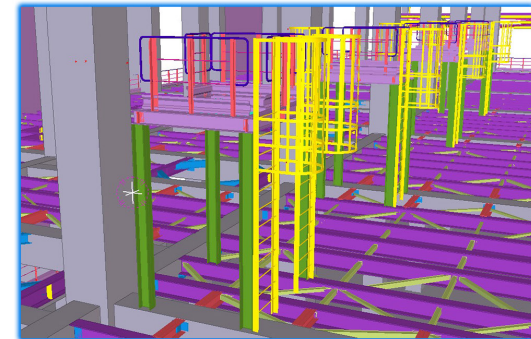
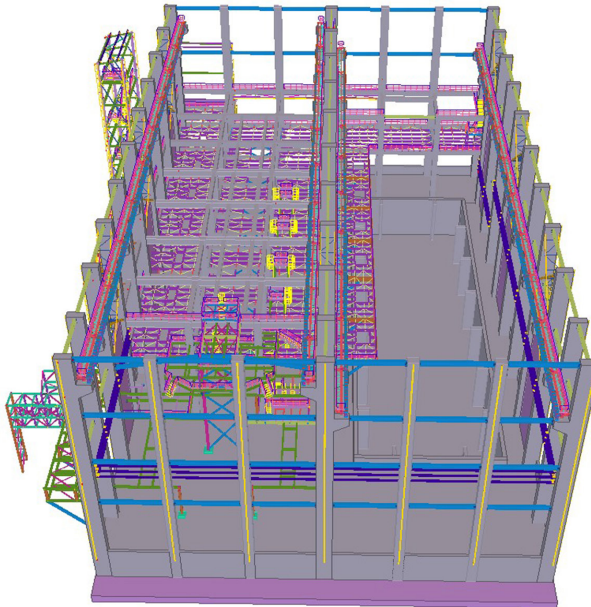
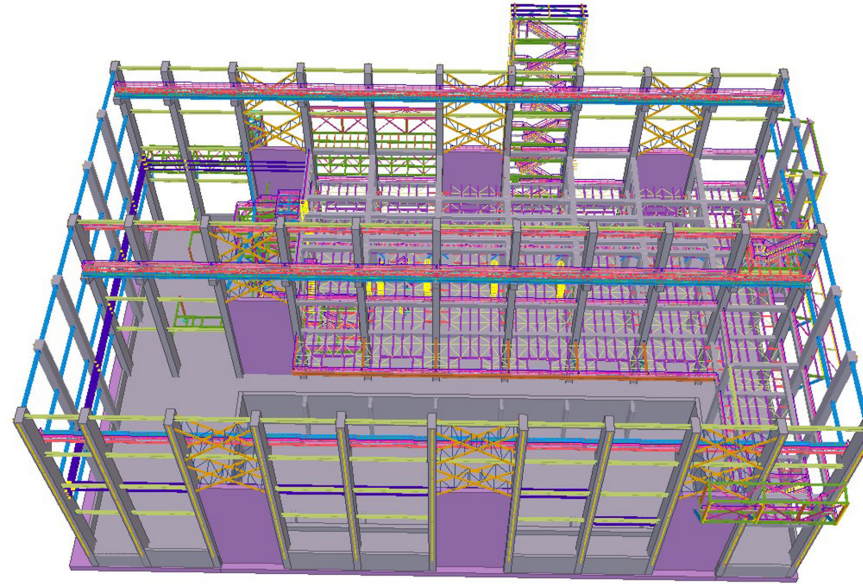
750 ton
Steel Weight



Uzbekistan
Project Location

Scope of Work

- ✓ 3D Tekla Model
- ✓ Single Part Drawings
- ✓ Assembly Drawings
- ✓ Erection Drawings



MOF3401601-BRIDGES



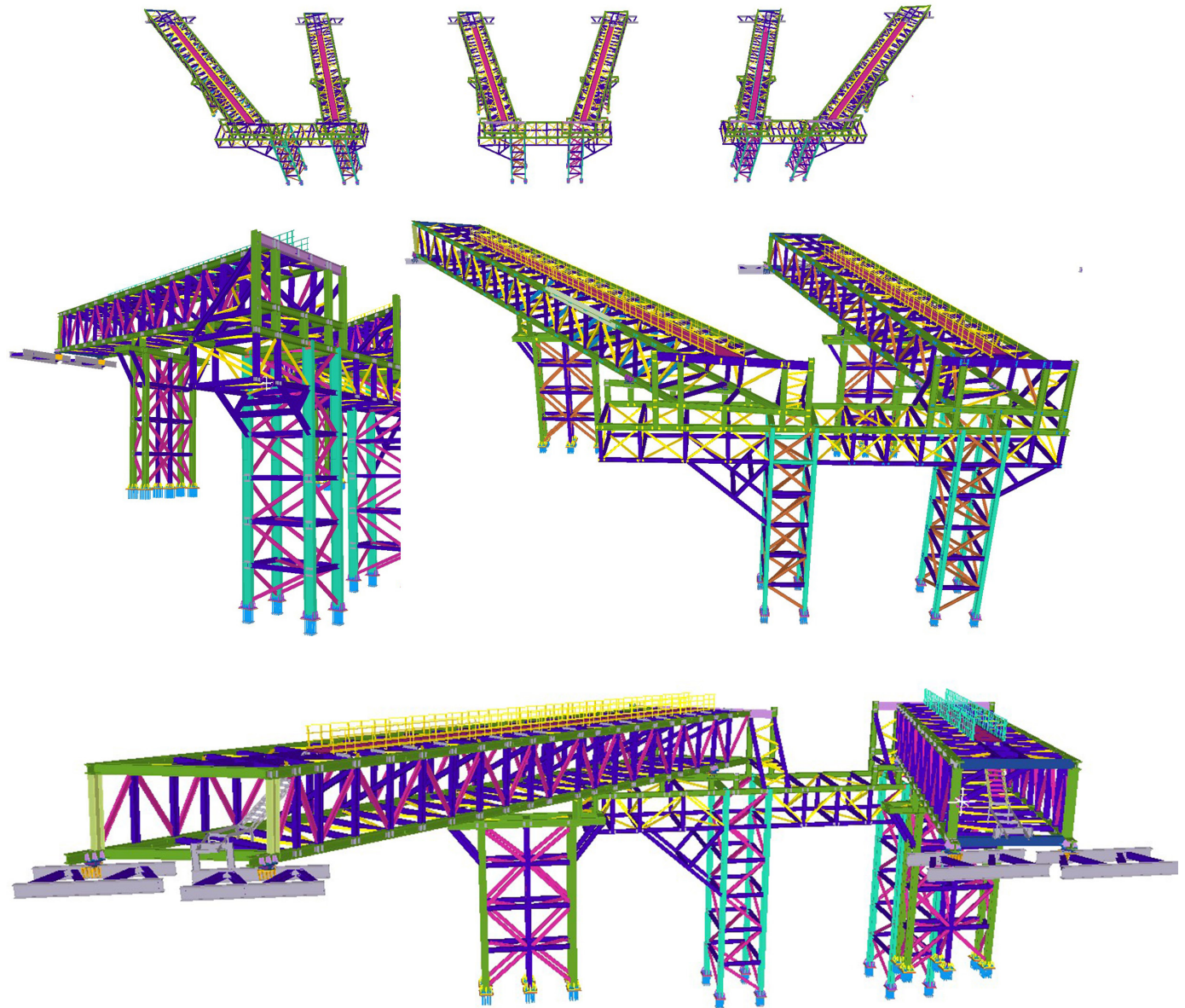
1,660 ton
Steel Weight



Uzbekistan
Project Location

Scope of Work

- ✓ 3D Tekla Model
- ✓ Single Part Drawings
- ✓ Assembly Drawings
- ✓ Erection Drawings



MOF3 401400-2043



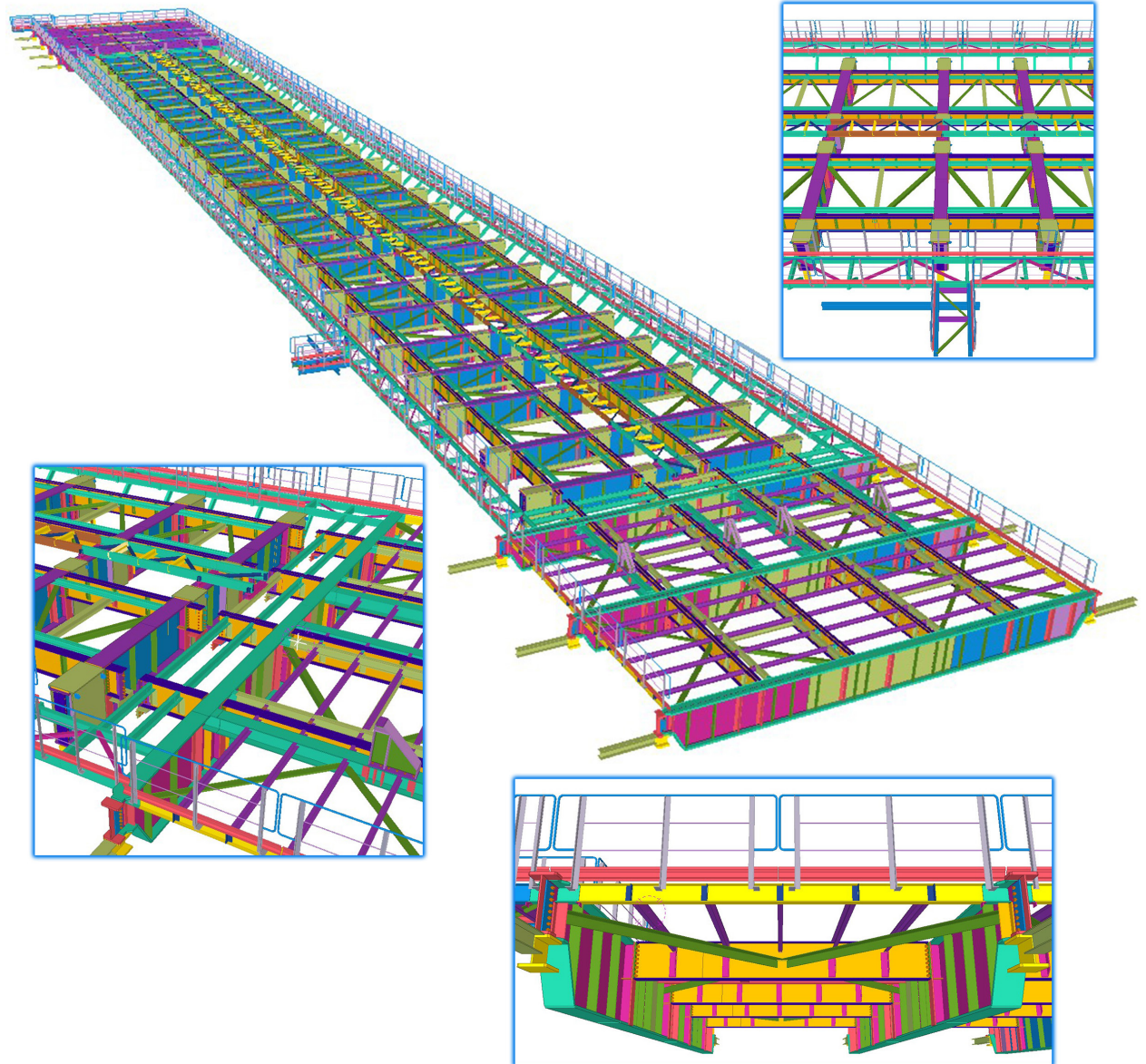
515 ton
Steel Weight



Uzbekistan
Project Location

Scope of Work

- ✓ 3D Tekla Model
- ✓ Single Part Drawings
- ✓ Assembly Drawings
- ✓ Erection Drawings



AKTAU CONTCOL WCRANE



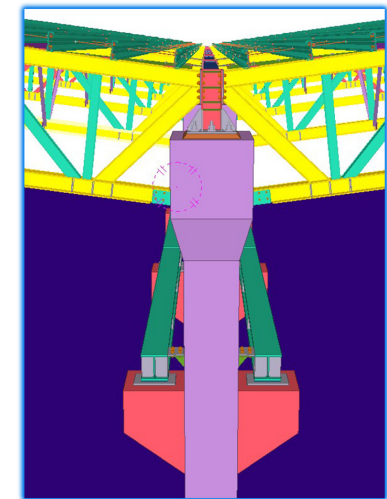
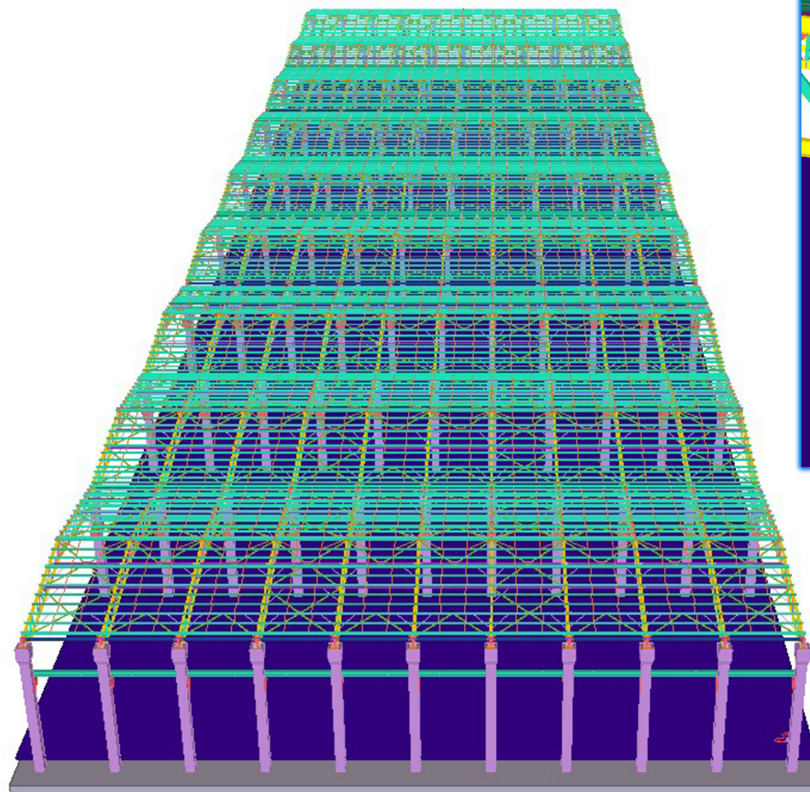
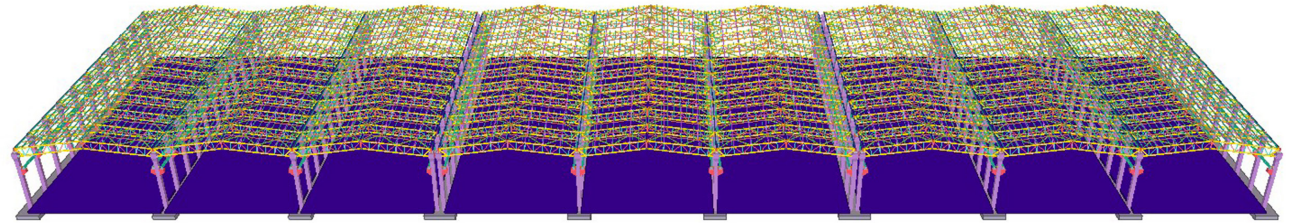
885 ton
Steel Weight



Uzbekistan
Project Location

Scope of Work

- ✓ 3D Tekla Model
- ✓ Single Part Drawings
- ✓ Assembly Drawings
- ✓ Erection Drawings



SAM62-30



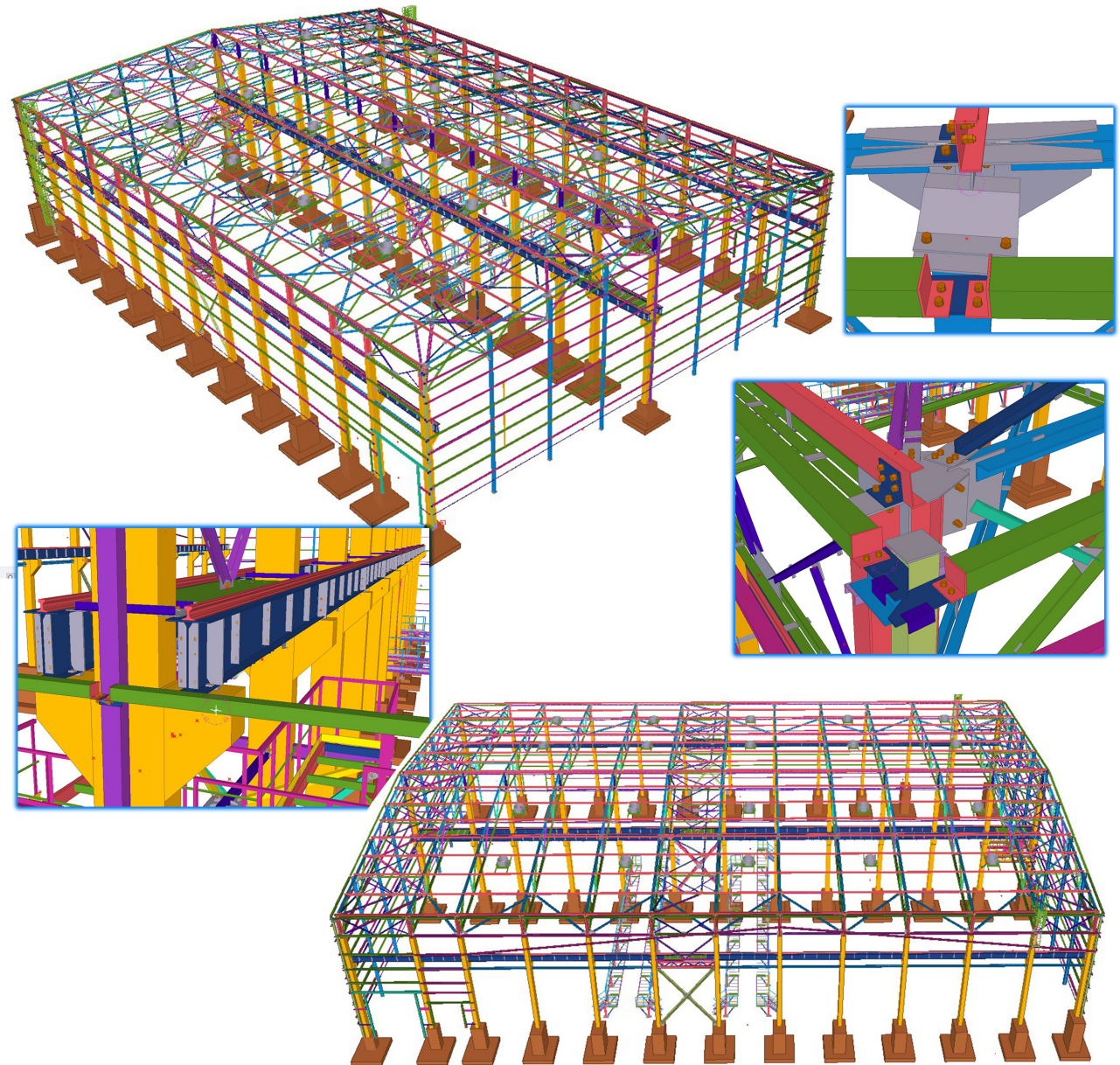
300 ton
Steel Weight



Uzbekistan
Project Location

Scope of Work

- ✓ 3D Tekla Model
- ✓ Single Part Drawings
- ✓ Assembly Drawings
- ✓ Erection Drawings



CHUTES



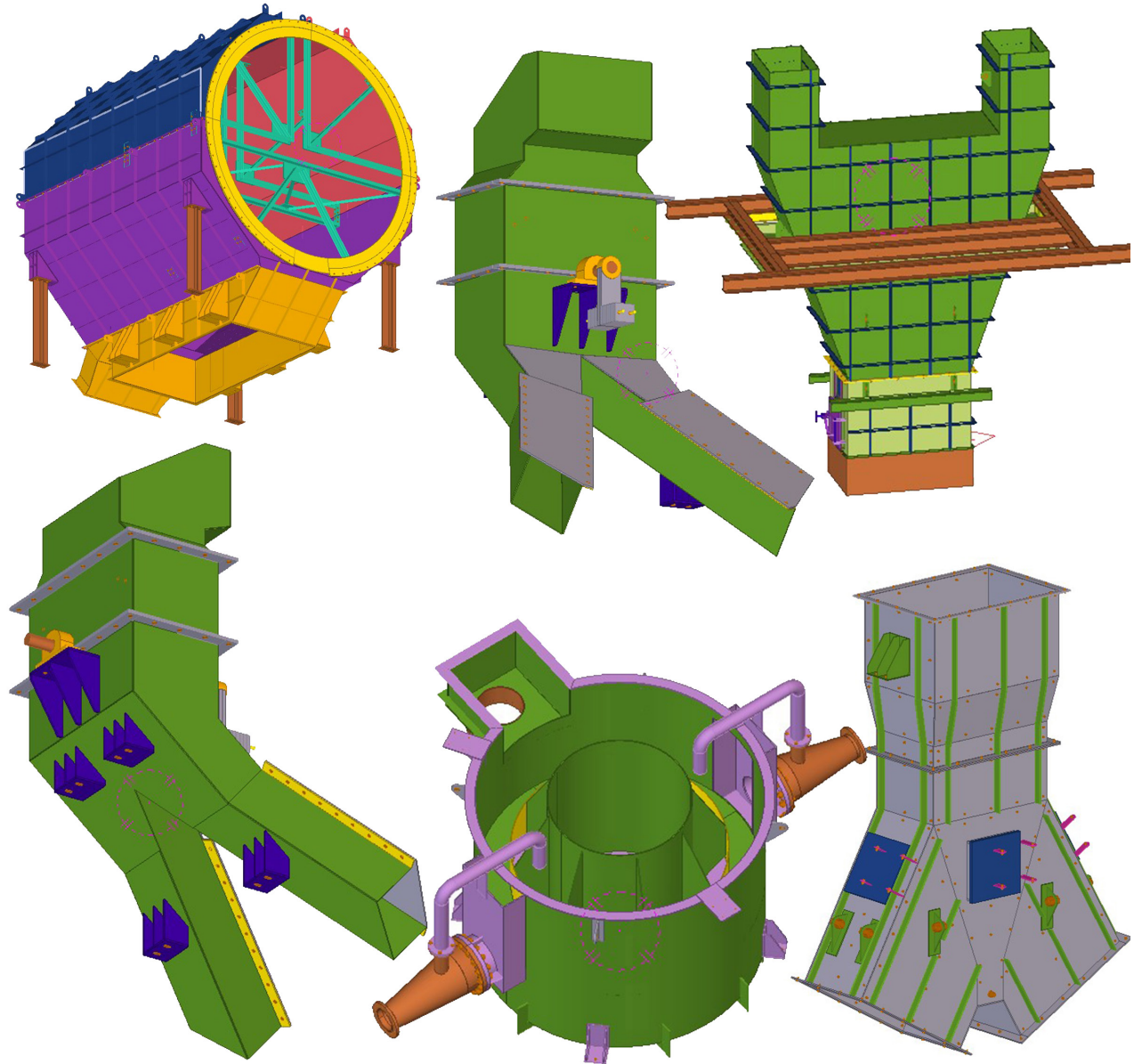
Depend on model
Steel Weight



Uzbekistan
Project Location

Scope of Work

- ✓ 3D Tekla Model
- ✓ Single Part Drawings
- ✓ Assembly Drawings
- ✓ Erection Drawings



The Blade Speed Park Track



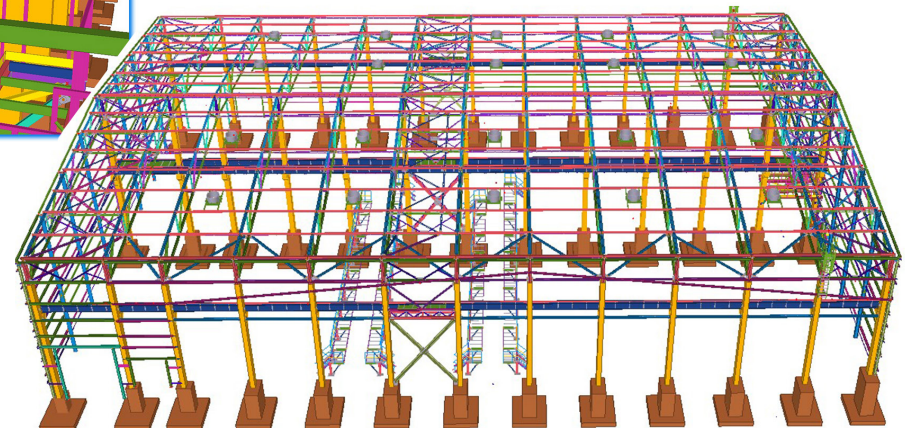
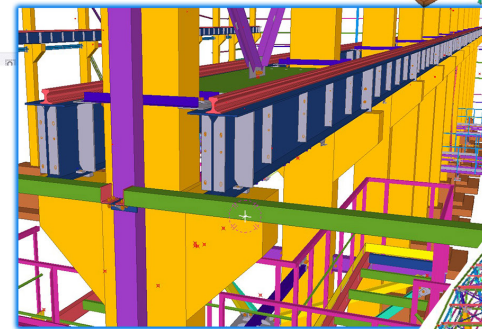
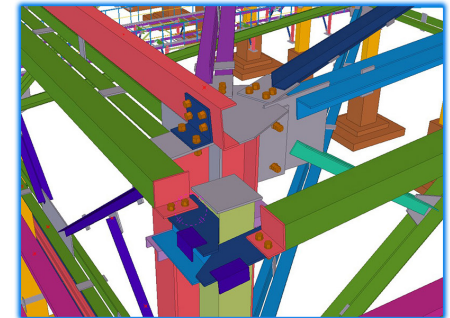
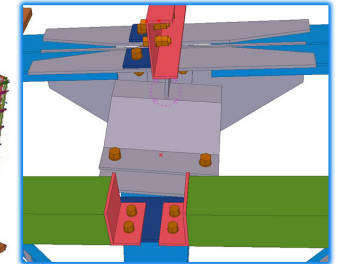
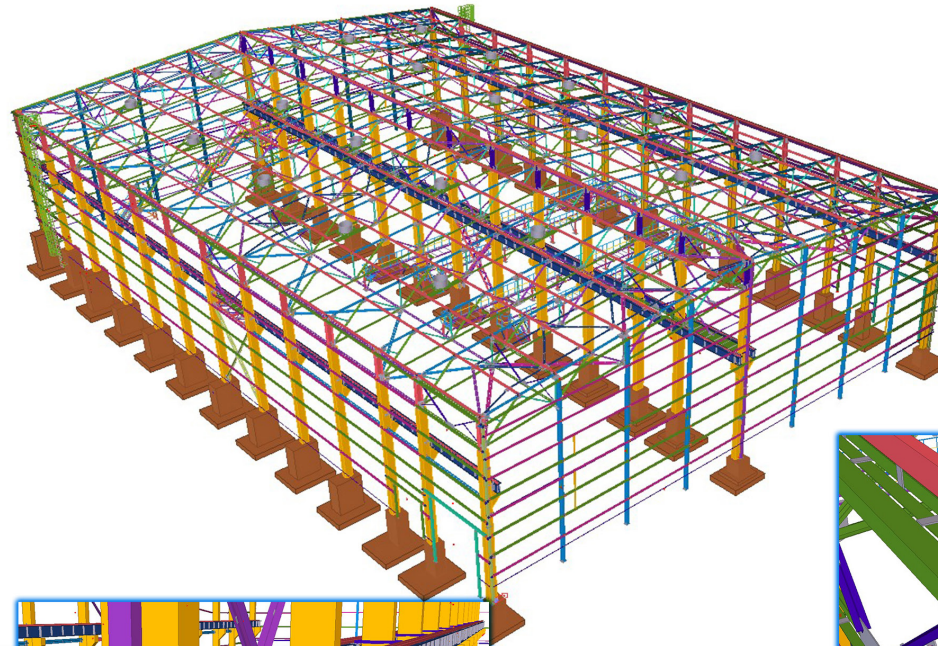
40,000 ton
Steel Weight



Saudi Arabia
Project Location

Scope of Work

- ✓ 3D Tekla Model
- ✓ Single Part Drawings
- ✓ Assembly Drawings
- ✓ Erection Drawings



Contact & Final Statement

Dear Sir / Madam

Greetings from Asenor Engineering

Thank you for taking the time to review our corporate profile.

We are authorized to provide full-cycle services in construction, architecture, and development across the Kingdom and the Gulf region.

For proposals, partnership inquiries or direct communication:

Email

gm@asenor.sa

Phone

+966 53 269 1384

Website

<https://asenorgroup.com>

Registered Entity

Asenor Engineering LLC CR No.: 7050515647

Location

Al Khobar, Riyadh Region, Kingdom of Saudi Arabia
Head Office: Istanbul, Türkiye